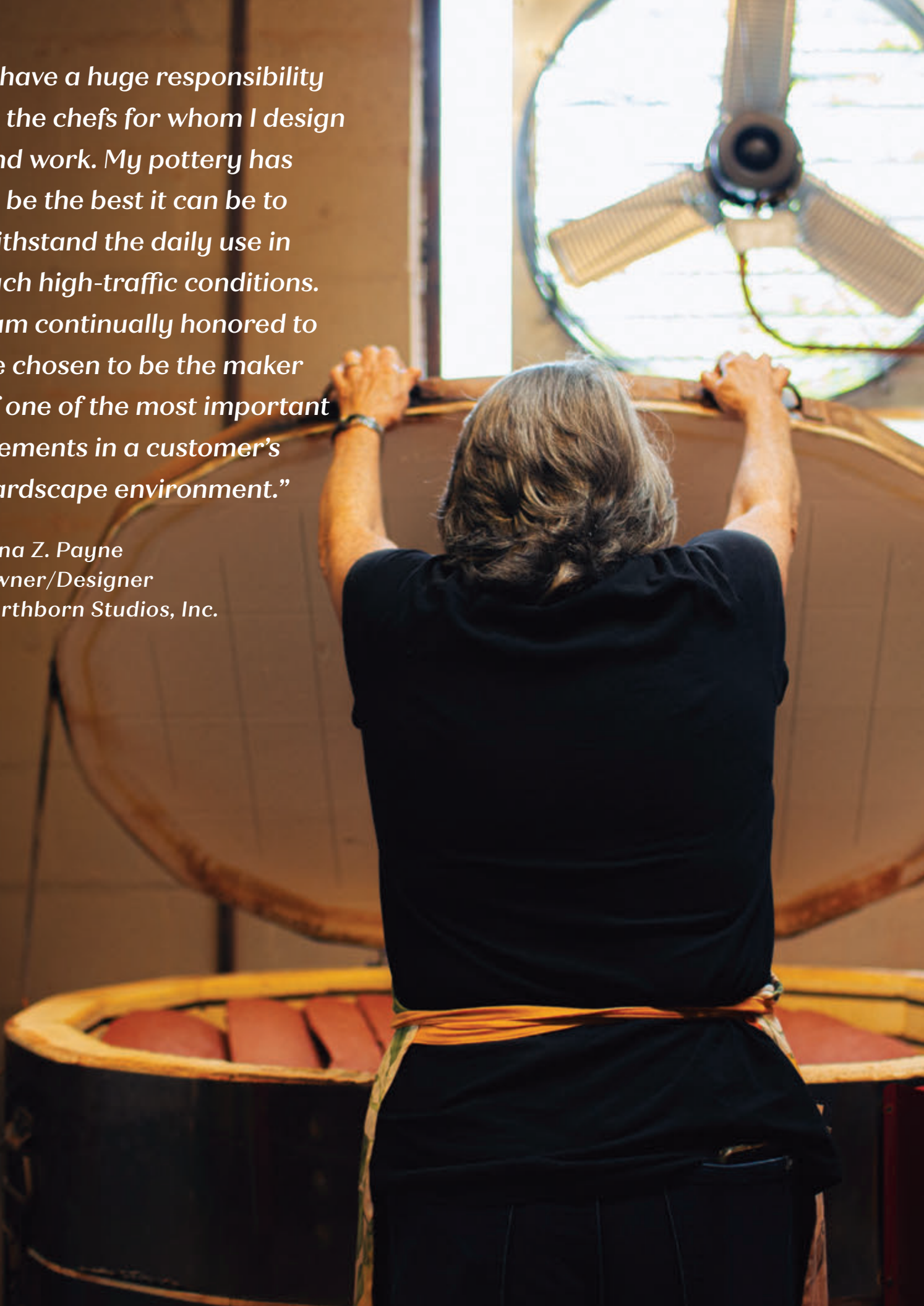




Framing Culinary Art Since 1997

*“I have a huge responsibility to the chefs for whom I design and work. My pottery has to be the best it can be to withstand the daily use in such high-traffic conditions. I am continually honored to be chosen to be the maker of one of the most important elements in a customer’s hardscape environment.”*

*Tena Z. Payne  
Owner/Designer  
Earthborn Studios, Inc.*





Lillie Harrigan

## EARTHBORN STUDIOS

is a company built from our love of art and our passion to create it.

Earthborn Studios is a small band of artists who are making a dream come true by hard work, creativity, and inspiration. We enjoy a common ground with the chefs for whom we design.

Both chef and potter take raw ingredients from the earth to be carefully subjected to the right time and temperature in the ovens, and then placed on the table to be enjoyed. Mixers, baker's racks, oven mitts, rolling pins, measuring cups, etc., are tools of the potter as well as the chef. As in the high culinary arts, the art of clay is expressive and exacting.

Working with clay gives us a connection to the earth and a respect for our Creator who made it. Each piece is a labor of love; handmade, heartfelt, and designed with inspiration from nature in all its glory: the greens of pine trees, the blues and violets of the sky, the downy warmth of cotton fields, golden hues of honey, and the deep reds from our Alabama soil.

We hope that each piece of Earthborn pottery leaves you with a sense of connectedness with nature and a glimpse of the Divine influence in each of our lives as we express our love and appreciation in each piece. Like the people we cherish, each piece of Earthborn Pottery is unique and one of a kind, a treasure to be passed down for generations.

## TABLE OF CONTENTS

PLATES & SIDE DISHES .....	8-13
BOWLS .....	14-15
DRINKING VESSELS.....	16-17
PLATTERS .....	18-20
SERVING DISHES.....	21-27
ACCESSORIES .....	28-31
TESTIMONIALS .....	32-33
PRODUCT BRANDING.....	34-35



Tena Z. Payne, Owner/Designer of Earthborn

## THE SCIENCE OF FUNCTIONALITY

Tena has spent years developing her own techniques and glazes to meet the high standards of today's commercial kitchens. Earthborn products have been professionally tested for "GLLE" (glaze leaching), scratch, compression, dishwasher, and thermal shock resistance. Critical attention to firing times, temperature, and clay-glaze relationship make Earthborn products extremely durable. The clay body is completely vitrified so any chips are non-absorbent and the dark clay blends into the natural edge.

Our products have been restaurant proven since 1997. All of our products are proudly made by hand in our 24,000 square foot facility located in Leeds, Alabama.



**Earthborn pottery has been proven in the restaurant industry since 1997. The journey started with a willing chef and a hungry potter who both had something to gain from the relationship.**

Earthborn pottery and its process developed over time and yielded a product uniquely situated to custom design. Working one-on-one with the chef, insights to specific functionality can easily be translated into a finished vessel. The collaboration between the two artists creates a personal statement available in no other way.



Earthborn pottery has achieved so much success for so many: Just like creating successful food, it's all about the science. Here are some of the reasons:

#### CORE MATERIALS

Earthborn begins with a custom blend of clay designed for strength and beauty. High in iron content, the clay is fired to maturity at 2400 degrees. When it chips (and it takes a beating to make it chip) it chips dark, disappearing into the natural edge and design of each piece. Vitrification prevents any absorption.

#### PROCESS

Ram™ process vs casting: When clay is cast, it is dissolved in water and poured into a mold. When Earthborn clay is Ram™ pressed there is already more material in the vessel because the ratio of clay to water is higher. Hence the piece is more dense and stronger because of this process.

#### GLAZES

Earthborn glazes are the result of years of testing refractory material and its relationship to the clay. These 'borosilicate' glazes are extremely hard and withstand the daily use in restaurant environments, including the thermal shock of dishwashers and abrasive detergents. High-fired and intrinsically interesting, the glaze and vessel fuse to form a tight bond and beautiful frame for culinary art.

#### TEMPERATURE

Earthborn pottery is fired twice—bisque and glaze. The glaze and clay fuse to form a tight bond. The final glaze temperature tops out at 2400 degrees. The clay is totally vitrified at this point.

#### CUSTOMIZATION

One of the beautiful things about Earthborn pottery is the design attribute availability to the chef/culinary professional. Chefs are artists too, and—rightly so— want the proper frame for their creations. This is where Earthborn excels. One-on-one collaboration results in a truly unique-to-the-property dining experience.

#### MADE IN AMERICA

A potter since the 1970s, Tena Payne developed Earthborn specifically to make plates for chefs. A coincidental meeting in 1997 led to the creation of tableware for the now-famous Hot and Hot Fish Club. Now Tena and her family create plating for properties worldwide. Made in Leeds, Alabama, and housed in a re-purposed watch factory, Earthborn Studios is a Certified Woman-Owned Business.

#### SATISFACTION GUARANTEE

Earthborn stands behind their product 100%. If for any reason a customer is unhappy with the product or its performance, Earthborn will replace.



## GLAZES

Our exclusive, high-fired borosilicate glazes are oven, microwave, and dishwasher-safe. Find your favorite or mix and match to create your own unique look. Note that glazes may appear different on flat and vertical surfaces. Some imprinted products may not be recommended in all glazes.



All images are representational. There are small differences authenticating they are handmade items.

*“Earthborn pottery is the perfect backdrop to our dishes. The quality is exquisite and people always ask where our plates are from. They really bring out the colors of our ingredients.”*

*Demetri Tsolakis  
Committee Boston*



# Plates & Side Dishes

*“Our chefs and restaurants have been working together with Earthborn Pottery since 1997. They provide us the opportunity to take a very hands-on approach in our working relationship allowing the chefs to come to her studio and help in the creative process, making it come out just as you visualize. Every piece is so unique, enhancing the visual aesthetics of our cuisines and adding a nice conversational piece for the guests.”*

*Chef Chris Hastings  
Idie Hastings Owner  
Hot & Hot Fish Club*





PLATES & SIDE DISHES



PLATES & SIDE DISHES



**6" THROWN SIDE PLATE**  
 HH6 | \$40  
 Approx: 1" x 6".  
 Shown in Bone.



**8" THROWN SIDE PLATE**  
 HH8 | \$50  
 Approx: 1" x 8".  
 Shown in Ocean.



**11.5" THROWN PLATE**  
 HH11.5 | \$60  
 Approx: 2" x 11.5".  
 Shown in Sage.



**SQUARE PLATE**  
 ED5 | \$60  
 Approx: 1" x 10" x 10".  
 Shown in Paradise Blue.



**ROUND FOOTED PLATE**  
 ED2 | \$60  
 Freeform round and footed.  
 Approx: 1.5" x 10".  
 Shown in Sky.



**ROUND FOOTLESS PLATE**  
 ED4 | \$60  
 Freeform round and un-footed.  
 Approx: 1" x 10".  
 Shown in Sage.



**SQUARE SIDE PLATE**  
 ES5 | \$45  
 Approx: 1" x 8" x 8".  
 Shown in Peacock.



**ROUND FOOTED SALAD APP**  
 ES2 | \$45  
 Approx: 1.5" x 8".  
 Shown in Hazel.



**ROUND FOOTLESS SALAD APP**  
 ES4 | \$45  
 Approx: 1" x 8".  
 Shown in Paradise Blue.

PLATES & SIDE DISHES



**RECTANGLE SIDE DISH**  
ESD4 | \$38  
Approx: 1.5" x 6" x 5".  
Shown in Paradise Blue.



**OVAL SIDE DISH**  
ESD3 | \$38  
Approx: 1" x 8" x 4".  
Shown in Sapphire.



**OVAL FOOTED SIDE DISH**  
ESD1 | \$38  
Approx: 1.5" x 8" x 4".  
Shown in Sierra.



**OVAL PLATE**  
ED7 | \$60  
Approx: 1" x 11" x 8".  
Shown in Hazel.



**RECTANGLE PLATE**  
ED6 | \$60  
Approx: 1" x 11" x 8".  
Shown in Black.



**THIN PLATE**  
EDT | \$60  
Approx: .75" x 11".  
Shown in Spruce.



**OVAL SIDE PLATE**  
ES7 | \$45  
Approx: 1" x 10" x 7".  
Shown in Sky.



**RECTANGLE SIDE PLATE**  
ES6 | \$45  
Approx: 1" x 9" x 4".  
Shown in Mountain Mist.



**THIN SALAD APP**  
EST | \$45  
Approx: .75" x 9".  
Shown in Moss.

PLATES & SIDE DISHES



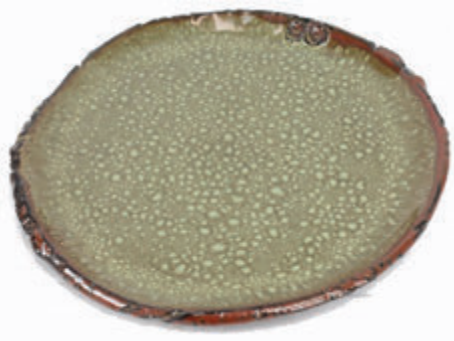
**SQUARE FOOTED PLATE**  
ED9 | \$60

Approx: 1.5" x 10" x 10".  
Shown in Vanilla Bean.



**SQUARE FOOTLESS PLATE**  
ED1 | \$60

Approx: 1" x 10" x 10".  
Shown in Vanilla Bean.



**SPRINGHOUSE PLATE**  
SH10 | \$60

Approx: .75" x 10".  
Shown in Hazel.



**LULU SALAD PLATE**  
LLSP1 | \$30

Approx: 1" x 6".  
Shown in Red.



**LULU SIDE DISH**  
LLB1 | \$24

Approx: 1.5" x 5".  
Shown in Caramel.



**FISH PLATE**  
EFISH1 | \$60

Real fish impression.  
Approx: 1" x 12" x 9".  
Shown in Vanilla Bean.  
Not suitable in all glaze colors.  
Ask for details.



**SQUARE GEO PLATE**  
GEO1 | \$60

Square plate with round serving well.  
Approx: 9.5" x 9.5".  
Shown in Vanilla Bean.



**4X5 TASTING PLATE**  
SO5 | \$20

Approx: 4" x 5".  
Shown in Sapphire.

PLATES & SIDE DISHES



**6X11 SHARE PLATE**  
S4 | \$50  
Approx: 6" x 11".  
Shown in Vanilla Bean.



**5X12 SHARE PLATE**  
S3 | \$45  
Approx: 5" x 12".  
Shown in Forest Brown.



**5X8 SHARE PLATE**  
SSA4 | \$30  
Approx: 5" x 8".  
Shown in Red.



**BELLINI'S PLATE**  
BEL1 | \$60  
Approx: .75" x 11".  
Shown in Bone.



**BELLINI'S PLATE**  
BEL2 | \$60  
Approx: 1.5" x 11".  
Shown in Charcoal.



**PASTA BOWL**  
PST-1 | \$60  
Approx: 2" x 9", 32 oz..  
Shown in Charcoal.



# Bowls

*“We use Earthborn pottery for everything! Each color, shape, and glaze helps our menus transition seamlessly with the rhythms of the seasons.”*

*Chef David Bancroft  
Acre  
Auburn, Alabama*



**MANSHIP THROWN BOWL**  
MS3 | \$50  
Approx: 2" x 8".  
Shown in Forest Brown.



**WIDE-RIM BOWL / COVER**  
HHC1 | \$42  
Companion pieces.  
Approx: 5.5" x 3".  
Shown in Vanilla Bean.

**WIDE-RIM SOUP BOWL**  
EWR5 | \$60  
Used by Hot & Hot Fish Club.  
Approx: 3" x 10".  
Shown in Vanilla Bean.



**WIDE-RIM BOWL**  
EWRB | \$50  
Approx: 2" x 9".  
Shown in Sapphire.

**BOWLS**



**ROUND NOODLE BOWL**  
ENB | \$20  
Approx: 2.5" x 4".  
Shown in Sapphire.



**FOOTLESS PORRIDGE BOWL**  
EBFL2 | \$50  
Approx: 3" x 8".  
Shown in Honey Butter.



**FOOTED PORRIDGE BOWL**  
EBF2 | \$50  
Great for soups, salads, and cereal.  
Approx: 3.5" x 8".  
Shown in Mountain Mist.



**OVAL NOODLE BOWL**  
EONB | \$20  
Approx: 2" X 6.6" x 3".  
Shown in Red.



**HALF-PORRIDGE BOWL**  
EBF2.5 | \$38  
Approx: 2.5" x 5".  
Shown in Caramel.



**OVAL PORRIDGE BOWL**  
EBO2 | \$50  
Approx: 3.5" x 9" x 4".  
Shown in Red.



**ENTREE BOWL**  
EBF4 | \$60  
Approx: 2" x 10".  
Shown in Waterfall.



**SORBET BOWL**  
EB.75 | \$20  
Approx: 1.5" x 5".  
Shown in Red.



**CREME BRULEE DISH**  
RBCB | \$50  
Approx: 2" x 7" x 5".  
Shown in Caramel.

# Drinking Vessels





DRINKING VESSELS



**SOUP MUG**  
ESM | \$45

Approx: 3" x 5".  
Shown in Red.



**SIDE-BY-SIDE MUG**  
EMSS | \$36

Approx: 3" x 3.5".  
Shown in Mountain Mist.



**SPRINGHOUSE MUG**  
EMSH | \$36

Approx: 3.5" x 3.5".  
Shown in Calypso Blue.



**SMALL MUG**  
EM1 | \$36

Approx: 4" x 3.5".  
Shown in Ocean.



**LARGE MUG**  
EM3 | \$45

Approx: 5.5" x 3.5".  
Shown in Hazel.



**HANDLE-LESS MUG**  
EM2 | \$35

Approx: 4" x 3.5".  
Shown in Calypso Blue.



**SMALL TUMBLER**  
EBT1 | \$35

Approx: 5.5" x 3.5".  
Shown in Paradise Blue.



**LARGE TUMBLER**  
EBT2 | \$42

Approx: 6.5" x 4".  
Shown in Caramel.



**ESPRESSO CUP & SAUCER**  
EEC1 | \$18 | CUP

Great for espresso or even a shot.  
Cup approx: 3" x 2". Shown in Opal.  
Shown together—sold separately.

EES1 | \$12 | SAUCER

Perfect companion for our espresso cups.  
Saucer approx: 1" x 4". Shown in Calypso Blue.  
Shown together—sold separately.

# Platters



PLATTERS



**MEDIUM OVAL PLATTER**

EP6 | \$120

Approx: 1" x 14.5" x 9".  
Shown in Bone.



**LARGE OVAL PLATTER**

EP5 | \$180

Approx: 1" x 18" x 10".  
Shown in Red.



**EXTRA-LARGE OVAL PLATTER**

EP4 | \$265

Approx: 22" x 12".  
Shown in Forest Brown.



**SMALL OVAL SERVER**

EOS1 | \$40

Approx: 1" x 10.5" x 6".  
Shown in Lagoon.



**MEDIUM OVAL SERVER**

EOS2 | \$50

Approx: 1" x 13" x 7".  
Shown in Caramel.



**OVAL SERVING DISH**

OSD | \$65

Use it as a platter, serving dish or a  
dinner plate. Approx: 1" x 13.5" x 8".  
Shown in Peacock.



**MEDIUM SQUARE PLATTER**

EP1 | \$125

Approx: 1" x 13" x 13".  
Shown in Black.



**LARGE SQUARE PLATTER**

EP2 | \$180

Approx: 1" x 15" x 15".  
Shown in Paradise Blue.



**EXTRA-LARGE SQUARE PLATTER**

EP3 | \$289

Approx: 1" x 17" x 17".  
Shown in Waterfall.

## PLATTERS



**RECTANGLE CHARGER**  
ECGR | \$130

Approx: 1" x 15" x 12".  
Shown in Calypso Blue.



**ROUND CHARGER**  
ECG | \$140

Approx: 1" x 14".  
Shown in Waterfall.



**BREAD SERVER**  
EPBS | \$100

Approx: 1" x 20" x 7".  
Shown in Black.



**FISH PLATTER**  
EFISH3 | \$185

Real fish impression. Great as a server or just display it on a stand. Approx: 1" x 20" x 9". Shown in River Rock. Not suitable in all glaze colors. Ask for details.



**PIZZA PLATE**  
SP11 | \$80

Approx: .5" x 13".  
Shown in Red.



**EXTRA-LARGE  
RECTANGLE PLATTER**  
ERP-XL | \$275

Approx: 1" x 18" x 11".  
Shown in Red.



# Serving Dishes

“Earthborn Pottery provides uncommon superior products to represent Four65 Woodfire Bistro + Bar’s brand and philosophy. The artisan handcrafted serving dishes and plateware are also regionally made which furthers our sustainability efforts.”

Executive Chef Chris Huerta  
Four65 Woodfire Bistro + Bar  
Old Edwards Inn  
Highlands, NC



SERVING DISHES





**MINI BAKER**  
EBK.5 | \$20  
Approx: 1" x 3".  
Shown in Red.



**EXTRA-SMALL BAKER**  
EBK1 | \$32  
Approx: 2" x 4".  
Shown in Forest Brown.



**SMALL BAKER**  
EBK2 | \$40  
Approx: 2" x 6".  
Shown in Sierra.



**MEDIUM BAKER**  
EBK4 | \$75  
Approx: 2.5" x 8".  
Shown in Red.



**LARGE BAKER**  
EBK6 | \$110  
Approx: 3" x 10".  
Shown in Forest Brown.



**EXTRA-LARGE BAKER**  
EBK8 | \$135  
Approx: 3.5" x 12".  
Shown in Hazel.



**SMALL RECTANGLE BAKER**  
CASS1 | \$50  
Approx: 2" x 6" x 5.5".  
Shown in Peacock.



**MEDIUM RECTANGLE BAKER**  
CASS2 | \$85  
Approx: 2.5" x 10" x 8".  
Shown in Peacock.



**LARGE RECTANGLE BAKER**  
CASS3 | \$135  
Approx: 2.5" x 13" x 11".  
Shown in Peacock.

SERVING DISHES



**TUREEN  
SERVING BOWL**  
EBF5 | \$70  
Approx: 4" x 8".  
32 oz.  
Shown in Red.



**MEDIUM ROUND  
SERVING BOWL**  
EBF6 | \$175  
Approx: 6" x 12".  
Shown in Calypso Blue.



**LARGE ROUND SERVING BOWL**  
EBF8 | \$275  
Approx: 8" x 16".  
Shown in Sierra.



**EXTRA-SMALL THROWN BOWL**  
EB1 | \$30  
Approx: 3" x 4.5".  
Shown in River Rock.



**SMALL THROWN BOWL**  
EB2 | \$50  
Approx: 3" x 6".  
Shown in Black.



**SMALL PIE PLATE**  
PP1 | \$40  
Approx: 1.5" x 7".  
Shown in Waterfall.



**MEDIUM THROWN BOWL**  
EB4 | \$75  
Approx: 4" x 9".  
Shown in Hazel.



**LARGE THROWN BOWL**  
EB6 | \$110  
Approx: 5.5" x 10".  
Shown in Caramel.



**LARGE PIE PLATE**  
PP2 | \$55  
Approx: 1.75" x 9.5".  
Shown in Waterfall.



SERVING DISHES



**SMALL OVAL  
SERVING BOWL**  
EOSB1 | \$120

Approx: 3" x 14" x 10".  
Shown in Gold Dust.



**MEDIUM OVAL  
SERVING BOWL**  
EOSB2 | \$185

Approx: 4" x 15" x 11".  
Shown in Forest Brown.



**LARGE OVAL  
SERVING BOWL**  
EOSB3 | \$250

Approx: 5" x 17" x 12".  
Shown in Paradise Blue.



**SMALL RECTANGLE BOWL**  
ERB1 | \$115

Approx: 3" x 11" x 8".  
Shown in Hazel.



**MEDIUM RECTANGLE BOWL**  
ERB2 | \$130

Approx: 3" x 13" x 10".  
Shown in Ocean.



**LARGE RECTANGLE BOWL**  
ERB3 | \$135

Approx: 4" x 14" x 11".  
Shown in Waterfall.



**PARTY BOWL**  
SB5 | \$125

Approx: 6" x 15".  
Shown in Lagoon.



**DEEP OVAL  
SERVING BOWL**  
EDOSB | \$125

Approx: 4.5" x 12" x 8".  
Shown in Red.



**FOOTED OVAL  
SERVING DISH**  
ROSD | \$65

Approx: 3" x 11" x 7".  
Shown in Peacock.

SERVING DISHES



**SMALL CAKE PLATE**  
ECP1 | \$75  
Approx: 3.8" x 8".  
Shown in Bone.



**MEDIUM CAKE PLATE**  
ECP2 | \$135  
Approx: 4" x 12".  
Shown in Hazel.



**LARGE CAKE PLATE**  
ECP3 | \$150  
Approx: 5" x 14".  
Shown in Sierra.



**SMALL PEDESTAL BOWL**  
EPB2 | \$75  
Approx: 7" x 7".  
Shown in Black.



**MEDIUM PEDESTAL BOWL**  
EPB4 | \$100  
Approx: 8" x 10".  
Shown in Calypso Blue.



**LARGE PEDESTAL BOWL**  
EPB6 | \$175  
Approx: 10" x 12".  
Shown in Hazel.



**SMALL SQUARE BOWL**  
ESSB1 | \$45  
Approx: 1.5" x 6.5" x 6.5".  
Shown in Waterfall.



**MEDIUM SQUARE BOWL**  
ESSB2 | \$70  
Approx: 2.5" x 9.5" x 9.5".  
Shown in Vanilla Bean.



**LARGE SQUARE BOWL**  
ESSB3 | \$90  
Approx: 3" x 12" x 12".  
Shown in Peacock.



**EXTRA-LARGE CAKE PLATE**  
ECP4 | \$225  
Approx: 6" x 17".  
Shown in Bone.



**CHIP AND DIP**  
RCD | \$110  
Approx: 2.5" x 13".  
Shown in Lagoon.



**REVERSIBLE CAKE PLATE**  
MMCP | \$110  
Use as a cake plate or chip & dip.  
Approx: 3" x 10".  
Shown in Hazel.



**EXTRA-LARGE PEDESTAL BOWL**  
EPB8 | \$275  
Approx: 12" x 14".  
Shown in Ocean.



**OIL DIPPING PLATE**  
EODP | \$60  
Approx: 11".  
Shown in Lagoon.



**HOLIDAY PLATTER**  
HPI | \$390  
Our largest platter.  
Approx: 5" x 23".  
Shown in Hazel.



**OYSTER PLATE**  
EOP | \$180  
Approx: 17" x 13".  
Shown in Sapphire.



**CHEF'S HAMMOCK**  
ECH | \$275  
Approx: 10.5" x 22".  
Shown in Vanilla Bean.



**EXTRA-LARGE SQUARE BOWL**  
ESSB4 | \$225  
Approx: 5" x 13" x 13".  
Shown in Waterfall.



**MOTHER BOWL**  
EMB | \$325  
Approx: 7" x 18".  
Shown in Galaxy.

# Accessories

“Tena and Earthborn pottery have been setting the standard in stoneware for years.

Her work stands alone;  
her passion, creativity,  
and understanding  
for what restaurants  
and consumers  
want makes  
Earthborn pottery  
consistently  
exceptional.”

Executive Chef Jim Smith  
Hummingbird Way  
Mobile, Alabama

Custom design for the Executive Chef  
of the State of Alabama Jim Smith,  
currently owner of Hummingbird Way,  
Mobile, AL.

Photo credit: Elizabeth Gelineau



## ACCESSORIES



**IRON CHEF PITCHER**

EBP1 | \$25

Approx: 3" x 3". 8 oz.  
Shown in Red.



**FLARED-LIP PITCHER**

EBP2 | \$25

Approx: 3" x 3.5". 8 oz.  
Shown in Ocean.



**SYRUP PITCHER**

EBP3 | \$45

Approx: 7" x 3.5". 16 oz.  
Shown in Caramel.



**2-QUART PITCHER**

EBP4 | \$130

Approx: 9.5" x 5.5". 64 oz.  
Shown in Waterfall.



**FARMHOUSE PITCHER**

EBP5 | \$130

Approx: 9.5" x 5.5". 64 oz.  
Shown in Vanilla Bean.



**SOAP DISPENSER**

EV5 | \$48

Great for dish or hand soap.  
Approx: 6" x 3".  
Shown in Opal.



**IPAD OR BOOKSTAND**

EIS | \$45

Prop up that iPad or cookbook.  
Approx: 3.5" x 7" x 6.5".  
Shown in Caramel.



**3 WELL TRAY**

3WB | \$50

Great for sides and toppings.  
Approx: 1.75" x 7".  
Shown in Sapphire.



**SEASONING DISH**

ESD | \$20

Seasoning makes the world go round.  
Approx: .75" x 6" x .75".  
Shown in Red.



**UTENSIL CROCK**  
ECC | \$110

Approx: 7" x 6.6".  
Shown in Peacock.



**OLIVE TRAY**  
EOT | \$28

Works great for kabobs too.  
Approx: 1" x 16" x 2".  
Shown in Waterfall.



**BUTTER TRAY**  
MS1 | \$20

Great for butter or crackers.  
Approx: .75" x "8 x 4".  
Shown in Mountain Mist.



**WINE CROCK SMALL**  
EWC1 | \$175

Approx: 8" x 8".  
Shown in Peacock.



**WINE CROCK LARGE**  
EWC3 | \$250

Approx: 10" x 10".  
Shown in Sapphire.



**SPOON REST**  
ESR1 | \$45

Keep that counter clean.  
Approx: 2" x 9" x 6".  
Shown in Honey Butter.



**BUD VASE**  
EBUD | \$45

Approx: 6" x 3.5".  
Shown in Red.



**SMALL FREEFORM VASE**  
EV1 | \$25

Approx: 5" x 2".  
Shown in Caramel.



**MEDIUM FREEFORM VASE**  
EV2 | \$30

Approx: 7" x 2".  
Shown in Waterfall.

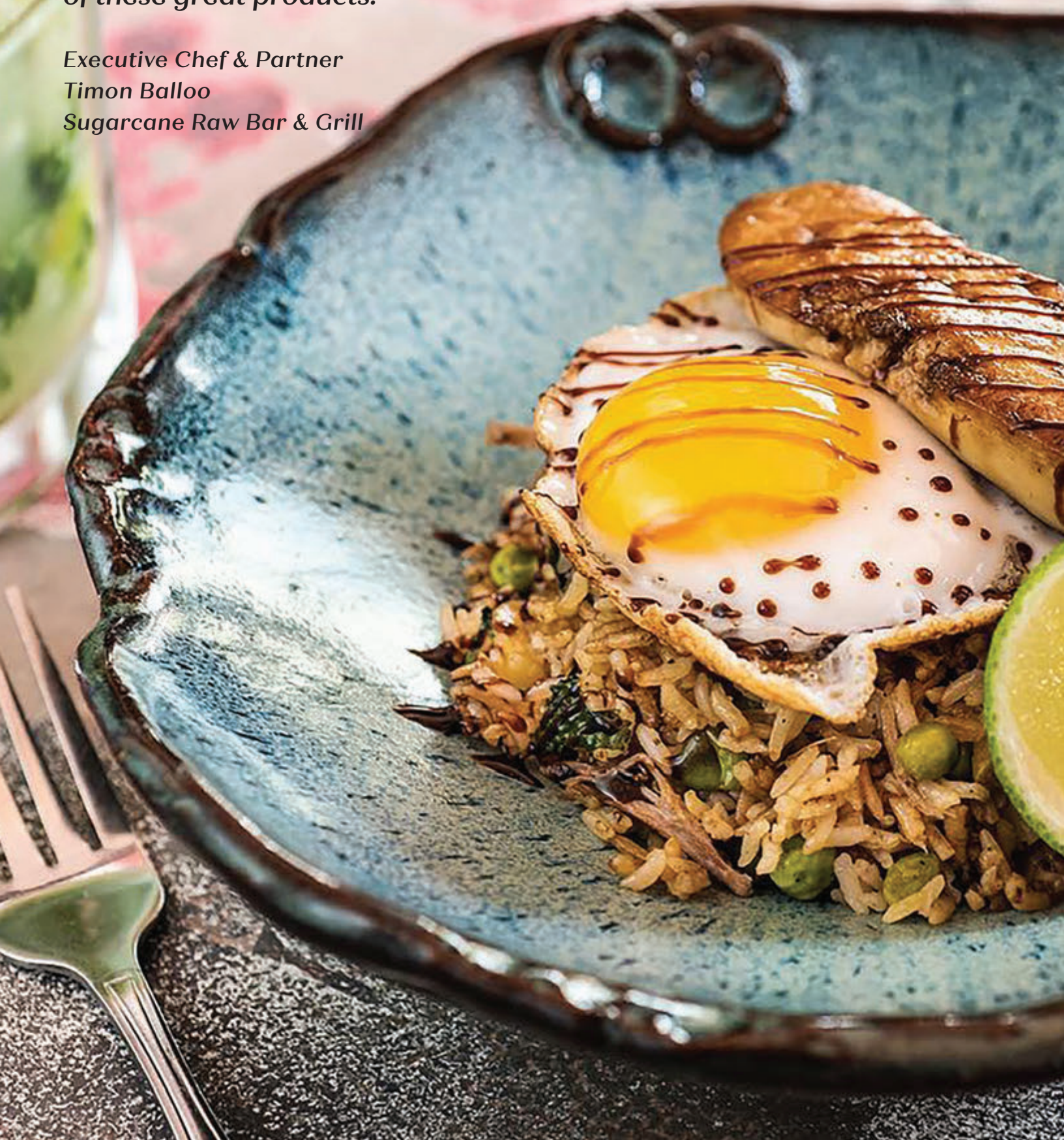


**LARGE FREEFORM VASE**  
EV3 | \$35

Approx: 11" x 2".  
Shown in Red.

**“Earthborn’s products helped define our brand in multiple outlets. From upscale, fine dining to a casual concept, the plates visually stand out while offering durability and value. It’s an honor for me to work with these plates and I put my reputation on the quality of these great products.”**

**Executive Chef & Partner  
Timon Balloo  
Sugarcane Raw Bar & Grill**





## TESTIMONIALS



*"I really enjoy using Earthborn dinnerware. The dinnerware is durable and beautiful. I use the pieces for everything from casual to fine dining events. I have gotten many compliments from guests who admire the dinnerware. I need to add more to our collection."*

*Chef Johnnie Taylor  
Wind Creek Casino*



*"Earthborn Pottery is the only plateware I will use at SpringHouse. Since we opened, Tena has supplied me with coffee mugs to butter dishes and everything in between. The durability of Earthborn Pottery has allowed me to continue using what I think to be one-of-a-kind product which showcases our food in the best way."*

*Chef Rob McDaniel  
SpringHouse, Russell Crossroads,  
Lake Martin Alabama*



*"The plates are great, not only do they look amazing and unique, but their durability is impressive too. Their handmade quality brings out the beauty of our artisan fare, and presents our guests with a truly exquisite and delicious experience."*

*Chef Daniel Doherty  
Chef de Cuisine of Duck  
& Waffle, London*



*"I continue to be amazed and impressed by the tableware you made for our restaurants. Besides being unique and beautiful, they are remarkably durable. As you can imagine, our dishes and bowls see a lot of use from our 300+ daily guests."*

*Chef Shimon Bokovza  
Sushi Samba and Sugarcane  
Raw Bar & Grill*



*"We have been searching for a durable china option for years - with Earthborn Pottery, we have found durability, but also inspirational colors and shapes. The natural approach to this china brings a refreshing element to our dining room and helps set the tone for a refined dining experience."*

*Chef David Bull  
Congress, Bar Congress  
and Second Bar + Kitchen*



*"Earthborn encompasses the wholesome and rustic approach that I put into my cuisine. Food is love, and there is no better way to display our love than on Earthborn pottery."*

*Jeffery Compton  
Executive Chef at Amour House*



Earthborn delivers high-quality artisan stoneware for professional and home use. All of our products are oven, microwave, and dishwasher safe. We make both hand-built and thrown pieces. All orders are hand-made and glazed by our experienced staff. Whether you are a chef or caterer, looking for new serving ware, or an interior designer looking for that right piece, we have a selection that is sure to please. With over 100 products and 27 glazes, your options are endless.



### PRODUCT BRANDING

Market your business with your name or custom logos. Perfect for restaurant, businesses, corporate gifting and awards. Requires a one-time stamp fee for each design.

### CUSTOM PRODUCTS

Don't see what you want? No worries, we can make it. Sink basins, lamps and custom tiles are some of our other projects. Contact us for help with your unique project.



### WHOLESALE AND RESTAURANT PURCHASING

Wholesale pricing is available to resellers with a minimum order of \$2,000. Resellers must purchase additional product totaling \$2,000 a year.

Chefs receive wholesale pricing. There is no minimum order for chefs. Please pay within three days of receiving your shipment to avoid late fees.

Contact us at (205) 702-7055 for more information on setting up a wholesale or hospitality account.

This catalog reflects retail pricing.



*A Special Thanks To:*

Acre, Bellagio Casino & Resort, Botanic, Committee Boston, Duck and Waffle, Four65, Hot & Hot Fish Club, Hummingbird Way, Lodge at Torrey Pines, LuLu's, Lusin, Manship Woodfired Kitchen, Rumi's Kitchen, SpringHouse Restaurant, Sugarcane, Sushi Samba.

Oven-safe, dishwasher-safe, microwave-safe

The product has been tested for quality and safety. The clay is durable and the abrasive-resistant glazes are industrial dishwasher safe. This pottery can be used in the microwave and in the oven when pre-heated under hot tap water or placed on a cookie sheet with a wet towel underneath to prevent thermal shock.



**Earthborn Studios, Inc.**

7575 Parkway Drive | Leeds, Alabama 35094

[earthbornpottery@yahoo.com](mailto:earthbornpottery@yahoo.com)

(205) 702-7055

[earthbornpottery.net](http://earthbornpottery.net)

[facebook.com/earthbornstudios](https://facebook.com/earthbornstudios)

[instagram.com/earthbornpottery](https://instagram.com/earthbornpottery)

Certified Woman Owned Business



online retail  
catalog

